



BUILDING YOUR PROFESSIONAL IDENTITY IN MEDICINES DEVELOPMENT: 3 LESSONS FROM A PFIZER LEADER

How does a career in biopharma shape identity and purpose? Carmine Colavecchia's journey shows how mentorship, change, and patient impact define the path.

Read more on page 2.

TABLE OF CONTENTS

Three Lessons from a Pfizer Leader
on Professional Identity • P. 2

Now Enrolling: Fall 2025 GMDP
Academy Modules • P. 3

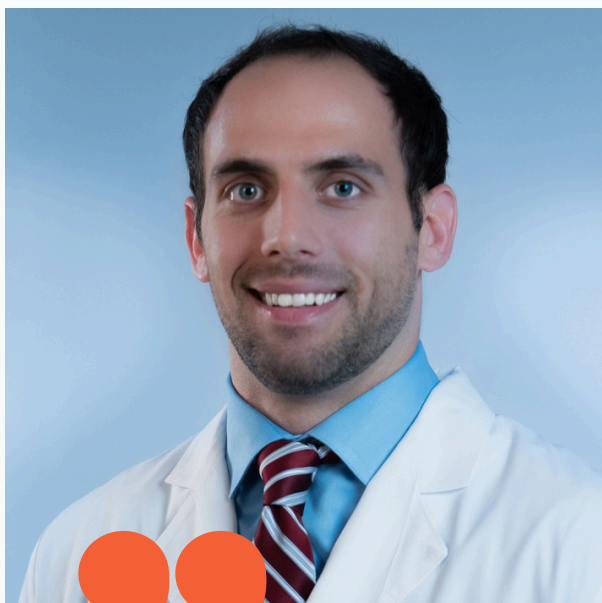
How the CMD Program Prepares
Professionals in Clinical Trials • P. 4

From Discovery to Delivery:
Preparing an Innovation-Ready
Global Health Workforce • P. 4

The Expanding Role of Education in
Healthcare • P. 5

Shifting Standards in U.S. Medicines
Use: Key Insights and Global
Implications • P. 5

Building Your Professional Identity in Medicines Development



“Whether it’s mentorship, teaching, or early exposure to service-oriented work, these foundational experiences often influence how we lead, collaborate, and contribute in our roles. It can be really valuable to invest in these moments, whether as a learner or a mentor.”

**Carmine Colavecchia,
PharmD, PhD**

3 LESSONS FROM A PFIZER LEADER

What defines a career in medicines development—and how does it shape who we become? For Carmine Colavecchia, the journey from hospital-based care to global leadership at Pfizer was anything but linear. His story reflects the path many professionals take: marked by mentorship, change, and a deep sense of purpose tied to patient impact.

In his standout essay for the GMDP Academy’s Certification in Medicines Development program, Carmine highlights three key lessons from the front lines of biopharma:

- Early influences shape long-term purpose. Foundational experiences like mentorship, teaching, and service guide how we lead, collaborate, and contribute.
- Career changes are part of growth, not setbacks. Shifting roles or industries can feel like a loss—but often lead to new meaning and impact.
- Real-world evidence connects science to patient care. Turning data into clinical insight is key to making treatments effective where it matters most.

Carmine’s journey brings these lessons to life in a way that’s both personal and widely relatable. Read the full essay [here](#).

MODULE 7: LEADERSHIP IN MEDICINES DEVELOPMENT

Dates: September 29 – November 21, 2025

Tuition: \$3,000 USD

Weekly Commitment: 3–5 hours

Final Assessment Due: December 1, 2025

Build confidence and competence in your leadership style through interactive webinars and real-world application. Topics include courageous leadership, thought leadership, change management, and resilience. The module culminates in a personalized Leadership Action Plan.

MODULE 8: DIGITAL TECHNOLOGY IN MEDICINES DEVELOPMENT

Dates: September 29 – November 9, 2025
(Orientation begins Sept 22)

Tuition: \$3,000 USD


Weekly Commitment: ~5 hours

Learn how digital tools are reshaping R&D, clinical trials, communication, regulation, and patient engagement. This 8-lesson module includes 2 expert-led webinars and covers topics such as digital ethics, risk management, emerging technology, and patient-centered design.



NOW ENROLLING

- 100% online and globally accessible
- Certificate of Completion from GMDP Academy
- World-class speakers and interactive learning
- Perfect for professionals in Medical Affairs, R&D, Regulatory, Clinical, and Digital Health

 Apply by September 15, 2025 to reserve your seat and lead the future of pharma.

 [Start Your Application](#)

BRIDGING THE GLOBAL GAP: HOW THE GMDP ACADEMY'S CMD PROGRAM PREPARES PROFESSIONALS FOR INCLUSIVE TRIALS

Africa bears 25% of the world's disease burden but hosted just 1.1% of global clinical trials last year. This stark imbalance highlights systemic barriers—from complex regulatory hurdles to ethical challenges—that delay access to new therapies and exclude diverse populations.

The GMDP Academy's Certification in Medicines Development (CMD) equips professionals with the skills and knowledge to design and lead equitable, patient-centered clinical trials worldwide. Through a comprehensive, globally aligned curriculum, CMD prepares learners to navigate regulatory complexity, foster cross-functional collaboration, and build sustainable research partnerships—especially in low- and middle-income regions.



As regulatory harmonization advances, CMD graduates are positioned to transform global clinical research and ensure no patient population is left behind. [1] [🔗 Learn more here.](#)

FROM DISCOVERY TO DELIVERY: PREPARING AN INNOVATION-READY GLOBAL HEALTH WORKFORCE



At the recent Biopharmaceutical CEO Roundtable in London, leaders from top pharma companies highlighted a crucial truth: realizing the full potential of science to revolutionize healthcare demands strong policies, equitable access, and a skilled workforce ready to drive innovation.

Pharmaceutical development is complex—taking 10-15 years, screening thousands of compounds, and carrying high failure rates. Yet, breakthroughs continue, fueled by over \$139 billion in R&D and thousands of medicines in development worldwide.

The GMDP Academy's CMD program trains professionals to lead innovation by focusing on regulation, safety, access, and leadership—helping translate discoveries into patient care. [2] [👉 Read more here.](#)

REBUILDING TRUST IN HEALTHCARE: THE EXPANDING ROLE OF MEDICAL EDUCATION

In an era of widespread health misinformation and shifting public trust, Medical Education has evolved from a compliance task to a strategic imperative. GMDP Academy's **Module 6, Lesson 6—The Evolving Role of Medical Education**—guides Medical Affairs professionals to ethically steward knowledge across regions, disciplines, and digital platforms.

Key frameworks in this lesson include Moore's Levels of Outcomes Measurement, which move beyond basic participation to evaluate true impact on patient and community health. The lesson also covers the Medical Affairs Translation Model, connecting data generation to real-world implementation through effective knowledge transfer.



 Next cohort starts September 1!

Click [here](#) to learn more.

SHIFTING STANDARDS IN U.S. MEDICINES USE: KEY INSIGHTS AND GLOBAL IMPLICATIONS



The IQVIA Institute's 2025 report reveals major shifts in U.S. medicine use, including:

- GLP-1 therapies now make up 17% of diabetes prescriptions, with obesity treatment prescriptions quadrupling in 2024
- Opioid prescriptions have dropped to 1999 levels, alongside a 29% decrease in overdose deaths
- Persistent disparities remain, with access and cost barriers affecting medication adherence

These insights are vital for medicines development professionals worldwide navigating innovation, policy, and equitable access. [3]

 Read the full report [here](#).

REFERENCES

1. Iyer, J. K. (2025, July 9). Improving access to innovative medicines in Africa starts with clinical trials. World Economic Forum. <https://www.weforum.org/stories/2025/07/healthcare-access-africa-clinical-trials/> Saleh, M., Sharma, K., Shamshudin, A., Obayo, I., Gondi, S., & Karimi, N. (2024). Regulatory approval of clinical trials: Is it time to reinvent the wheel? *BMJ Global Health*, 9(1), e013727. <https://doi.org/10.1136/bmjgh-2023-013727>
2. Biopharmaceutical CEO Roundtable. (2025, April 4). BCR London Statement. International Federation of Pharmaceutical Manufacturers and Associations (IFPMA). IFPMA. (2025). #AlwaysInnovating: The pharmaceutical innovation journey. Retrieved from <https://www.ifpma.org/initiatives/alwaysinnovating-the-pharmaceutical-innovation-journey/> Getz, K. (2024). Tufts CSDD: New insights on the clinical trial industry. *Clinical Trial Vanguard*. <https://www.clinicaltrialvanguard.com/conference-coverage/tufts-csdd-new-insights-on-the-clinical-trial-industry/>
3. IQVIA Institute for Human Data Science. (2025, April). Understanding the use of medicines in the U.S. 2025: Evolving standards of care, patient access, and spending. <https://www.iqvia.com/insights/the-iqvia-institute/reports-and-publications/reports/understanding-the-use-of-medicines-in-the-us-2025>

Thanks for reading!

The GMDP Academy Newsletter is published twice monthly and is compiled by the following:

Media Manager: Whitney English

Editorial Board: Pravin Chopra, Jacob Coots

Operations Office: Amanda Schmitt, Gustavo Silva, Kit Vale

CONTACT US:



420 Lexington Ave. Ste. 300
New York, NY 10170

(332) 333-2438